

Yearly Meeting News

EARLY EDITION
sessions.neym.org/ym-news

Friday/Saturday

5 & 6 Eighth Month, 2011

Vol. 351, No. 1

350 YEARS OF NEW ENGLAND FRIENDS: *Called To Heal A Broken Earth*

WORSHIP AT SESSIONS

Meeting for Worship for the Conduct of Business

At the center of Sessions is the meeting for worship for the conduct of business. Please refer to the schedule, agenda, and related materials in the **Advance Documents** you printed from the web (sessions.neym.org/advanceDocs) — particularly the items in the **Unity Agenda**, which the body will be asked to approve Sunday evening. If you brought your laptop, you can view them directly without printing them. If you forgot to print, you can obtain a copy at the Info Desk. Remember to put your name on your copy and carry it with you.

Meeting for Worship Sat 2–2:45pm, (Rotunda)

Early AM Worship — Sun–Thurs 6:30–7:15am

Outdoor Worship (Outside Bryant Ctr);
Worship for Healing (251)

Meeting for Worship — Sun 9am (Bello Center)

Worship & Singing (all ages until 9:45), Young Adult Friends have care of meeting, and Cuban Friends pastor Dikson Santiesteban (Puerte Padre MM) will offer a message, followed by unprogrammed worship. We celebrate the 20-year-old Bridge of Love between Cuban and New England Friends.

Quiet Worship Space — Sat–Mon, Wed 8:30am–10pm;

Tue 8:30–11:45am; *except during Anchor Groups*
(Interfaith Chapel)

Grace at Meals — 7:30am, 12:15pm, & 6:15pm

Friends will raise hands as a signal to join in prayer for grace. Some meals feature grace led by a YM committee.

Bible Half-hour — Mon–Thurs 8:30am (Janikies)

Maggie Edmondson, pastor of Winthrop Center (ME) Friends Church, will give the Bible Half-Hour.

FLGBTQC Meeting for Worship (343) Mon/Tues 4:15pm

We invite you to worship with us under the care of Friends for Lesbian, Gay, Bisexual, Transgender, and Queer Concerns, to open our hearts, quiet our minds and seek truth by waiting upon God. All are welcome.

Vespers 6:15–6:45pm (outside Bello Center, inside if rain)

Join us for Intergenerational Worship as evening falls, beginning with song and settling into silence. Other songs as led by the Spirit. Ending with a handshake or hug to gently prepare our youngest for bed and the rest of us for evening programs.

What are Anchor Groups?

This year, Friends will gather at Sessions eager for opportunities for spiritual sharing and connection. Your Anchor Group of 12–15 people will provide a place each day for grounding, discussion and a connection with others. It is a smaller community where we may explore our spiritual lives. Your Anchor Group assignment and meeting location are printed on the back of your name badge.

EVENTS ON SATURDAY

Rooms are in the Unistructure unless otherwise noted. M=Management Resource Center, in Unistructure. BC= Bryant Center (2nd Floor Only)

9:30am — **Permanent Board (347), Ministry & Counsel**
(BC, Nick's Place)

10am–5pm — **Registration & Check-in (Hall 16 Lobby)**

1–2:45pm — **Committees: Ministry & Counsel (BC, Nick's Place), Nominating (M36), Peace & Social Concerns (353), Finance (M40), Correspondence (M37)**

1–4:30pm — **Set Up Displays (Salmanson Dining)**

2–2:45pm — **Meeting for Worship (Rotunda)**

3–4:15pm — **Parent/Sponsor & Youth Orientations**

Child Care..... 3–4:15pm (245)

Jr. Yearly Meeting 3–3:30pm (MRC4)

Jr. High..... 3:45pm (M44)

Young Friends..... 3pm (BC 2A/B)

3:15pm — **Meeting w/ Attention to Speaking at Sessions**
(BC, Nick's Place)

4pm — **Anchor Group Facilitators Orientation—*all facilitators should attend* (382)**

4pm — **Special dietary needs meeting (Dining Hall)**

4pm — **Golf Carts (Shuttles) Drivers Meeting (Hall 16 Lobby)**

4:30pm — **1st Time Attenders Orientation (Bello)**

4:30pm — **Family Neighborhood Meeting (Townhouses H-M)**

6pm — **Daily Twelve-step meeting (354)**

6:45pm — **Opening Celebration (all ages) (Bello Center)**

8pm — **Welcoming & Anchor Groups (Bello Center)**

9–10pm — **Registration & Check-in (Hall 16 Lobby)**

Find the **YM News** Sat–Wed mornings at the Dining Hall & Info Desk—on the web at sessions.neym.org/ym-news

Deadlines for submissions: Saturday & Sunday by noon; Monday & Tuesday at 1:30pm.

Drop off materials at the Info Desk, in the Rotunda in the Unistructure. Only **Sessions** activities are posted in the **YM News**.

Please check with the Info Desk for where to post other announcements, notices, and flyers.

GUIDE TO BUSINESS AT YEARLY MEETING SESSIONS

NEYM sessions are larger than most monthly or committee meetings and some reminders may help us proceed gracefully.

Worship with a concern for business:

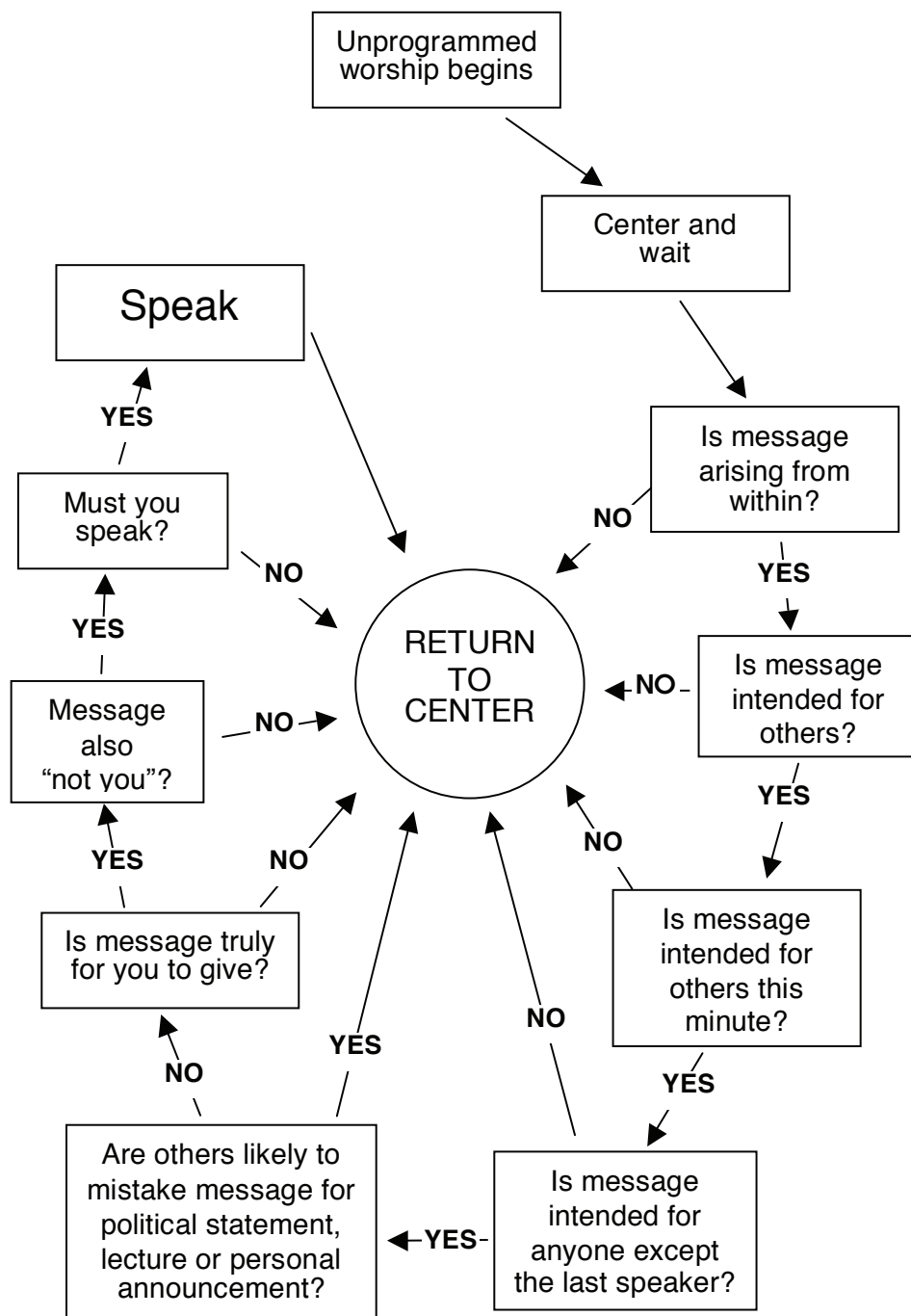
- The Spirit may speak through a less familiar voice if our oft-heard Friends restrain from the urge to speak too quickly.
- The order of business items is subject to change, depending on the Holy Spirit and Friends' self-discipline.
- We seek not compromise or a grumbling "well, OK," but clarity on what God calls us to do here and now, knowing that we may be led later to some further action, understanding, and love.
- Please look for text being presented; if it was ready by press time, look in these Advance Documents. Otherwise, look for a hand-out on the plenary table.
- Memorial minutes will be read at intervals during business Sessions.
- The doors will be closed to late-comers for five to ten minutes while Friends settle into worship. Please wait quietly outside the plenary room.

As you enter worship with a concern for business:

- Enter quietly!
- *Sit toward the front and center of the hall.*
- Leave room on the ends of the rows for late arrivals.
- Leave the accessible space free for those with special needs.

During worship with a concern for business:

- Stand (or raise your hand high) to be recognized.
- Remember that the clerk does not always call on people in the order in which their hands appeared.
- When the clerk has called on you, wait for the wireless microphone to come to you.
- Say your name and meeting.
- Speak slowly and briefly, limiting your remarks to the question at hand.
- Please do others the courtesy of sitting down while they are speaking, and listen prayerfully.
- If you speak easily, be cautious. Ordinarily a person should speak only once to an item of business, unless to answer a direct question or to signal a significant change of heart.
- If you are a Friend who does not speak easily, be bold if called. Your leadings may be the way the Spirit has chosen to speak to us.
- Please do not try to argue the clerks (or anyone else) into your position.
- While the clerks are trying to formulate a minute, help by holding them in prayer. Remember that the minute will rarely be worded precisely as you would have said it.



From pamphlet on Worship by Wellesley (MA) Friends Meeting, based on a chart by Sydney Chambers in the October 2005 issue of *Friends Journal*, "Speaking into the Silence"

M&C'S CARE FOR SESSIONS

Meeting with Attention to Speaking at Sessions: Preparing for and Grounding Our Vocal Ministry and Speaking to Aid Corporate Discernment: Saturday, 3:15–4:30pm at Nick's Place, Bryant Center. Friends will gather in waiting worship and be invited to respond to queries on how we prepare for and participate at Sessions. All are welcome! Our hope is that our worship, sharing and reflection will help us prepare for the work before us at Sessions. Please join us.

Open Meetings to Hear Concerns... Does the experience of Sessions feel overwhelming? Is there something happening that you really need to talk about? Ministry & Counsel is sponsoring open meetings to hear Friends concerns, either personal, or general. Come share them. Sun–Wed 4:30–5:30pm (342).

Ministry & Counsel Listeners... Several members of Ministry & Counsel will be available on a confidential basis to pray with or listen to any attenders having spiritual needs. Leave a message on the message board for Ministry & Counsel at the Info Desk.

Ushers/Hushers, Microphone Spacers, and Friends praying for the meeting for every plenary session are needed! Sign up sheets will be at the Info desk after the Ministry & Counsel meeting on Saturday.

FACILITIES & SERVICES

Hang on to your Keys! Lost keys are \$30 each. Lost FOB's (electronic key entry devices) are \$10 each.

First Aid & Medical Emergencies A first aid kit and directions to hospitals are available at the Info Desk, in the Rotunda. In an emergency, call 401-232-6911 for Bryant Public Safety **Life-or-Death: dial 9 then 911**. Friends with medical skills who could be "on call" should leave their names and room number at the Info Desk.

Handicap Parking on campus is for State or Bryant issued **official permits** only! Other cars **will be towed!** To get a permit for Sessions ask at the Info Desk.

For **Unistrukture Handicap Parking** go though the big parking lot and around behind the swimming pool.

Lost & Found is located at the NEYM Info Desk.

A BRIEF TOUR OF YOUR NAMETAG...

- Your registration number is on the upper left, just below the NEYM 2011 across the top.
- Your meal plan is on the right top.
- First Time attenders have a small "1st" printed at the right top & a red heart sticker. Please give them a special welcome!
- The big print: your name, local meeting, and the town where you live.
- Turn the tag over to see your registration number, housing, & volunteer assignments.
- Also on the back is your Saturday-Wednesday **Anchor Group** designation.



ACCESS RESOURCES INFORMATION

Access Resources, Jana Noyes–Dakota and Barbara Dakota, Coordinators. Volunteer or request assistance at the Info Desk
Volunteers needed to carry luggage & trays and drive shuttles (adult w/driver's license) **Contact:** Barbara Dakota, Shuttle Coordinator, at the Info Desk.

Golf Cart Shuttles: for mobility challenged folks—Between the Unistrukture and the dorms scheduled **Saturday Dinner – Thursday Lunch:**

7–8am & 4:30–5:30pm: dorms to Unistrukture
12:30–1:30pm & 8:45–9:45pm: Unistrukture to dorms
Special Dietary Needs... Sat 4pm (Salmanson Dining)
Meet with the Food Services Manager—the University accommodates dietary restrictions. Please submit Food Allergies forms (available at Registration/Info Desk).

Vegetarian & vegan food & beverage options are offered. The **regular menu** is available at the Info Desk.

Help carry dining trays: Encourage parents with small children to go to the head of dining lines and offer to help. Likewise, be alert to offer assistance to others.

NO RUNNING Zone: in the cafeteria and other high traffic areas! Please be careful not to bump into Friends. All of us should remind Friends who forget.

Special Needs Childcare is available. Parents: please sign up at the information desk. Indicate the times that you hope to have care. **Contact** Jean McCandless with questions.

VISIT THE SESSIONS BOOKSTORE!!

2 Bookstores: Rooms 242–244 & 250

Come to the **General Bookstore**—with book and consignment sections. Find that Quaker book you've always wanted to read! Check out new and old publications. Buy a stuffed hand to hold, a souvenir t-shirt, unique art work! Hungry? Have an Equal Exchange chocolate bar!

The **Children and Family Bookstore** will have a rich collection of curriculum, Bibles, books on prayer, worship and spiritual development, parenting, and children's books for all ages. Cards, batik peace flags, peace tambourines and starry crowns! Special collection of books on stewardship of the earth, global warming, etc. for children, parents and teachers! A special Children's Bookstore Activity Room is in Rm 250.

We're open: Sunday & Monday 11 am–1:30 pm, 4:15–9:30pm; Tuesday 11am–9:30 pm; and Wednesday 11am–5 pm.

We accept Visa & Mastercard, checks & cash.

TELEPHONE INFORMATION

On campus, dial the last four digits only. All rooms have one phone. A printed sheet of instructions is posted nearby.

NEYM Info Desk	x6996
NEYM Office	x8860
Registrar	x5709
Bryant Conference Office.....	x6921
Campus Security/Emergency.....	x6911
Campus Security/Emergency (cell).....	401-232-6911

ANNOUNCEMENTS

Rules for the Road: Bicycles, scooters, skateboards, etc.

State law requires helmets. No riding down stairs or near doors. Slow down or stop near walkers. Be especially careful riding downhill or after dark.

Bicycle Parking at the Unistructure will be at the same doorway as in past years, even though it is currently closed for construction. Please do NOT park bikes at other entrances.

Saturday Breakfast 7:30am & Lunch 11:30am —

ONLY *Friday night* arrivals get meal tickets

For *Saturday* arrivals: cash at the door.

Commuter Meals Cash ONLY Prices —

(ATM in Unistructure) Breakfast: \$9 Adult, \$6 Child;

Lunch: \$11 Adult, \$7 Child; Dinner \$14/\$10.

Please be Fragrance Free: Some Friends become ill when exposed to scented products. Please do not use: scented personal care products, spray deodorants, air fresheners, dryer sheets, or toxic markers (Crayola art materials are non-toxic).

Volunteers are the backbone of NEYM sessions. Help in the bookstore, carry a tray at a meal for someone in need, play with kids under the tent in the afternoon. Find something to do and volunteer! **Contact:** Betty Poynton through the Info Desk.

Need a Break? Walk the *Labyrinth*, located beyond the dining tent. So all can enjoy this walking prayer-filled meditation, **no running** in the *Labyrinth*. More information at Info Desk or Bookstore.

Displays will be around the window ledges of the Dining Hall. Set up begins on Sat 1–4:30pm, and then during any regular meal time.

Art Display: Bring exhibits to the upper level of the Rotunda (3rd floor) on Sat afternoon between 3pm and dinner. All art work must be under glass or plexi-glass. See Nancy Marstaller at the Info Desk.

A Bell Will Ring five minutes before the end of each Session, reminding us that it is time to pick up children.

Support Quaker Community! We thank you for your ongoing support and involvement. Please help us financially strengthen our Yearly Meeting. Contribution boxes and information on *GiveMonthly* will be available throughout the week. Please see Nancy Haines, Leslie Manning, or Jerry Sazama if you would like to discuss donating.

Historical Display: Stop by the display case outside the Bello Center library. See New England Quaker historical documents, books, and artifacts including an actual scrap of paper in George Fox's handwriting and a wax impression of his signet ring, an early Quaker school girl's sampler, handwritten and printed documents, pictures, and much more. Courtesy of David and Nancy Haines (Well).

About those Bathrooms in Hall 16... Each suite has a bathroom designated as either women's or men's. Find your closest bathroom, but do not change signage. For access, please DO NOT lock doors to suite common spaces.

Names of Absent Friends not at Sessions will be collected at the Info Desk. Postcards to each of these Friends will be available at the Info Desk for people to write greetings.

Bookstore Consignments: Bring your consignments in early! Check-in begins Sat, 9am. Children & Family Bookstore is open on Sat 3–6pm.

Update from the Nominating Committee: If you agreed to serve on a committee, your name will come forward in the **Unity Agenda** (see the *Advance Documents*).

The Women's Center: for worship sharing, conversation, or quiet space. Afternoon and evening, **except during Anchor Groups**, from 8am–11pm (Bryant Center 2C)

Friends of Color Center daily, **except during Anchor Groups** (350)

Games and Puzzles (Rotunda Mezzanine) Check out the selection stored near the Info Desk. Get to know new Friends over a new pastime! Put your name on what you brought to share.

Adult Nap Room Need some shut-eye but can't quite make it all the way back to the dormitory? The nap room is here to help! *Open except during Anchor Groups* (279)

2011 Pool Schedule—Sun–Wed: 2–5pm

Adult Lap Swim—Mon–Thurs: 7–7:45am

Message Boards are near the Information Desk. Please visit regularly to check your correspondence!

Check In: The Registrar's office (Hall 16, Rm. 308-C) is open Sun. 8–9am, 1–2pm & 7–9pm; Mon–Wed 9:30–10:30am & 4:15–5:15pm.

Early Check Out: Simply drop your key in the box at the Info Desk or the Lobby of Hall 16. If you rented linens, leave them bundled up on your bed. It's that simple!

Intentional Quaker Community: Interested in exploring an intentional community based on Quaker values being formed in New Hampshire? Join us for a **lunch discussion under the tent on Sunday**. Openings are available for full- and part-time participants, retreats and reflection as well as for prayer support. All levels of interest are welcome. **Contact** Kristna Evans or Leslie Manning for more information, or call 603-899-9660.

STAFF AVAILABILITY

NEYM Office at Sessions

Jeffrey Hipp and Priscilla Ewen

Hall 16 Suite 307..... 508-754-6760 –or– x8860

Sat–Wed 1–5:30pm

Registrar, Laurel Brill Swan, Hall 16 Suite 308..... x5709

Housing Coordinator, Josiah Erikson, Hall 16 Suite 308

Report room & key problems to college staff present with the registrar during check-in/out hours:

Hall 16 Suite 308

Saturday..... 10am–5pm & 9–10pm

Sunday..... 8–9am, 1–5pm & 7–9pm

Mon–Wed 9:30–11am, 1–2:30pm

On-Site Sessions Coordinator, Richard Frechette

Contact through NEYM Office or Info Desk..... x8860

Information Desk is staffed by volunteers during meals and major transition times.

Sat, Hall 16 Lobby

Sun–Thurs, in the Rotunda x6996